

LIGHT

LIGHT ELEC

LG-05PD4

DATA

SPEC. NO. :
 DATE : SZ21031302
 REV. : 2022/12/16
A/4

Approved By:

Checked By:

Version change

| REV. | Item(Con |
|------|---|
| A/0 | New Issue |
| A/1 | Change |
| A/2 | Pin and PCB change the photoelectric 3 surface warping. The |
| A/3 | Pin and PCB improved by changing 3 surface dimensions and |
| A/4 | In order to improve the yield without modified client, the size marking tec from "0.05±0.05" to "0± |
| | Technical and quality depart |

因增

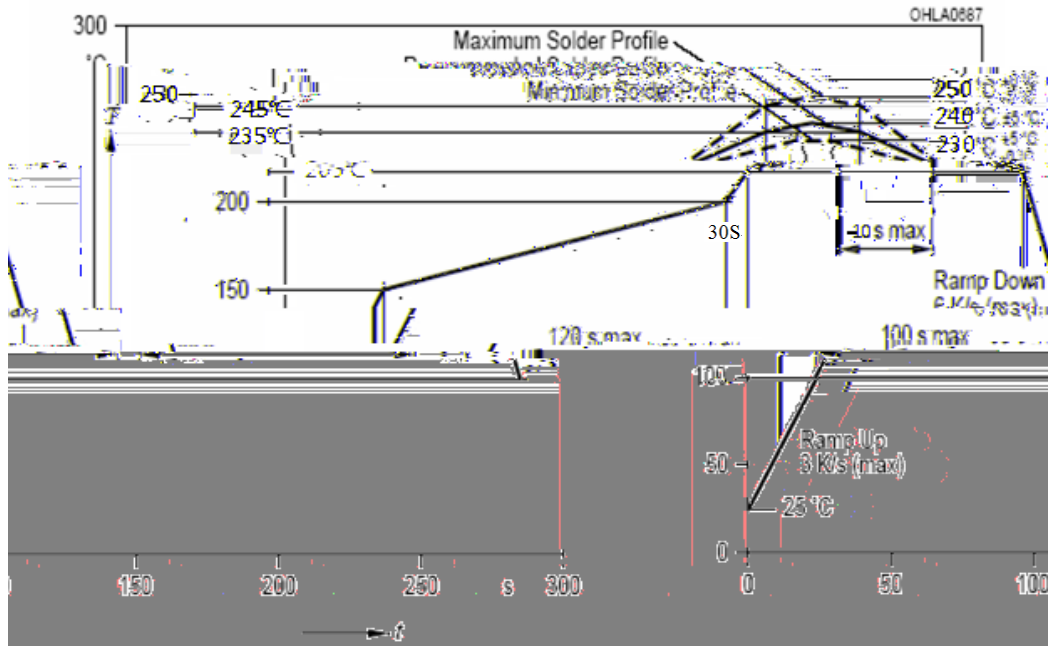
| Signer | Date |
|--------|----------|
| 增 | 2021/1/1 |
| 增 | 2021/1/1 |
| 增 | 2021/1/1 |
| 增 | 2022/2/1 |
| 增 | 2022/2/1 |

Part No. LG-05PD4D94K-003B-B-T

Electrical Optical Characteristics at Ta=25°C

| PARAMETER | SYMBOL | MIN. | TYP. | MAX. | UNITS | TEST CONDITIONS |
|-----------------------------|-----------|------|------|------|---------|--|
| Range Of Spectral Bandwidth | 0.5 | 840 | --- | 1100 | nm | --- |
| Reverse Light Current | I_L | 60 | 71 | 85 | μA | $V_R=5V$ $E_e=1mW/cm^2$ $=940nm$ |
| Reverse Dark Current | I_D | --- | --- | 100 | nA | $V_R=10V$ $E_e=0mW/cm^2$ |
| Reverse Voltage | $V_{(R)}$ | 30 | --- | --- | V | I_R |
| Forward Voltage | V_F | --- | --- | 1.5 | V | |

Suggest IR Reflow Condition For Lead Free:

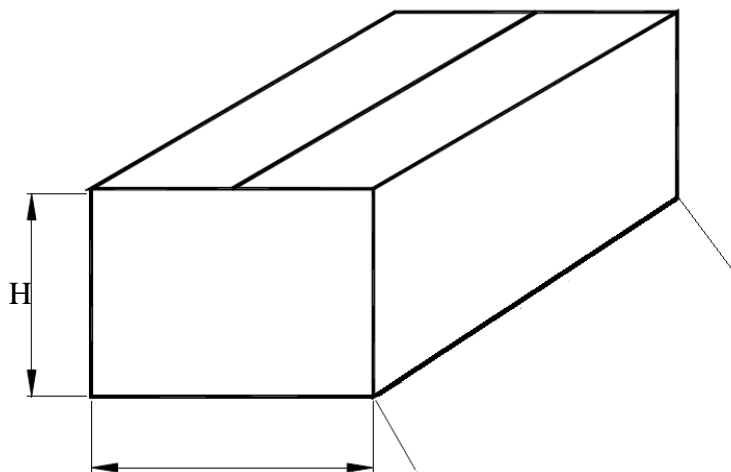


保

Package Spec:

1.1500pcs per reel .

15 reel per carton/Total 22500pcs per carton.



| Item | Specification | |
|------|---------------|---------|
| | minnum | Maximum |
| L | 465 | 475 |
| W | 405 | 415 |
| H | 405 | 415 |