

LG-ITR2C-553924 DATA SHEET

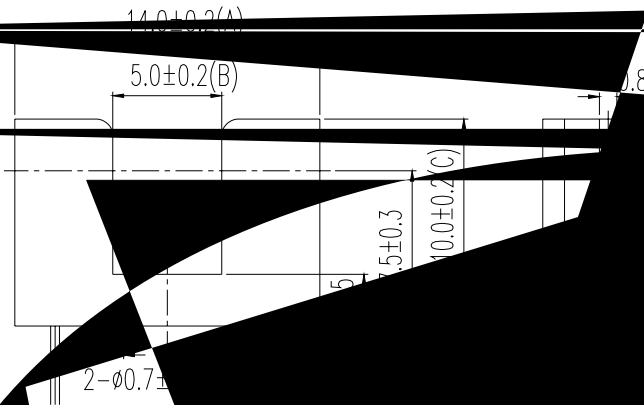
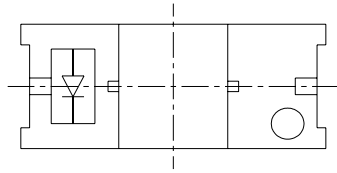
SPEC.NO.: SZ19090505
DATE: 2019/09/09
REV. A/0

Approved By:

Checked By:

Prepared By:

■ Package Dimensions



Notes:

1. All dimensions are in millimeters.
2. Tolerances unless otherwise specified are $\pm 0.25\text{mm}$.
3. Lead spacing is 2.5mm where the lead extends.

